

## Museum

### Museum Bench

2000

Daybeds and Benches



A fresh approach to the classic museum bench, BassamFellows' version is a sophisticated hybrid, ingeniously constructed using two separate frames, one made in hand-worked brass and the other in solid wood. The inner brass frame buttresses the bench's generous horizontal span, giving it balance and strength. Both frames are plainly visible to underscore the piece's structural integrity and synthesis of natural material. As with all the solid wood elements, precisely keyed joinery details emphasize the luxury of craft. The design of the Museum Bench allows for multiple configurations. The outer wood frame can hold a seating cushion or tray, depending on the desired use.

#### **CB-31 Museum Bench (full cushion)**

*W* 66 3/8", 168.5 cm  
*D* 16 1/2", 42 cm  
*SH* 15 1/8", 38.5 cm

#### **CB-31B Museum Bench (2/3 cushion and a removable CB-12 Tray)**

*W* 66 3/8", 168.5 cm  
*D* 16 1/2", 42 cm  
*H* 16 1/2", 42 cm  
*SH* 15 1/8", 38.5 cm

*Wood:*  
Solid Ash  
Solid Oak  
Solid Walnut

*Finish:*  
Ebonized black lacquer  
on Ash or bleached, white  
pigment, matte acrylic  
on Ash. Raw effect lacquer  
on Oak. Hand rubbed  
penetrating polyurethane  
on Oak or Walnut.

*Frame:*  
Carved, solid wood frame  
with oxidized brass inner  
frame.

*Upholstery:*  
Foam with edge banding.  
Single topstitch detail.

Made in USA



## Museum

### Museum Bench

2000

Description	W	D	H	Seat H	Arm H	Weight	Pkg Dim	Req. Textile	Req. Leather
<b>CB-31 Museum Bench (full cushion)</b>	168.5 cm 66 3/8"	42 cm 16 1/2"		38.5 cm 15 1/8"		52.2 kg 115 lbs	0.9 cu m 33.2 cu ft		
<b>CB-301A Museum Bench full Cushion</b>	161 cm 63 3/8"	38.5 cm 15 3/8"	3 cm 1 1/8"				1.8 m 2 yd	3.3 sq m 36 sq ft	



#### Ordering Instructions

##### Specify:

1. Wood Type
2. Finish

##### Example:

**CB-31-W-NA**

**W** Solid Walnut  
**NA** Natural Polyurethane

#### Construction/materials

##### Wood:

Solid Ash (**A**)  
Solid Oak (**O**)  
Solid Walnut (**W**)

##### Finish:

Ebonized black lacquer on Ash (**EB**) or bleached, white pigment, matte acrylic on Ash (**BL**). Raw effect lacquer on Oak (**RE**). Hand rubbed penetrating polyurethane on Oak or Walnut (**NA**).

##### Frame:

Carved, solid wood frame with oxidized brass inner frame.

##### Upholstery:

Foam with edge banding. Single topstitch detail.

Made in USA

#### Leather

**A**  
Coach  
Elegant

**B**  
Comfort

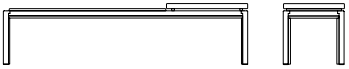


## Museum

### Museum Bench

2000

Description	W	D	H	Seat H	Arm H	Weight	Pkg Dim	Req. Textile	Req. Leather
<b>CB-31B Museum Bench (2/3 cushion and a removable CB-12 Tray)</b>	168.5 cm 66 3/8"	42 cm 16 1/2"	42 cm 16 1/2"	38.5 cm 15 1/8"		52.2 kg 115 lbs	0.9 cu m 33.2 cu ft		
<b>CB-301B Museum Bench 2/3 Cushion</b>	110.5 cm 43 1/2"	38.5 cm 15 3/8"	3 cm 1 1/8"				1.4 m 1 1/2 yd	2.5 sq m 27 sq ft	



#### Ordering Instructions

##### Specify:

1. Wood Type
2. Finish

##### Example:

**CB-31B-W-NA**

**W** Solid Walnut  
**NA** Natural Polyurethane

#### Construction/materials

##### Wood:

Solid Ash (**A**)  
Solid Oak (**O**)  
Solid Walnut (**W**)

##### Finish:

Ebonized black lacquer on Ash (**EB**) or bleached, white pigment, matte acrylic on Ash (**BL**). Raw effect lacquer on Oak (**RE**). Hand rubbed penetrating polyurethane on Oak or Walnut (**NA**).

##### Frame:

Carved, solid wood frame with oxidized brass inner frame.

##### Upholstery:

Foam with edge banding. Single topstitch detail.

Made in USA

#### Leather

**A**  
Coach  
Elegant

**B**  
Comfort

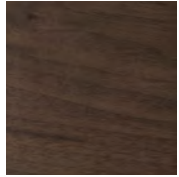
# Wood

BassamFellows  
Wood

Wood



Walnut  
W-NA



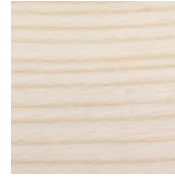
Walnut Black Oil  
W-BO



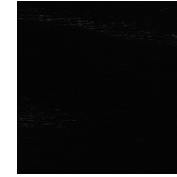
Oak  
O-NA



Oak Raw Effect  
O-RE



White Ash  
A-BL



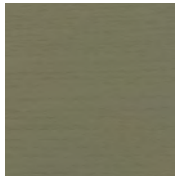
Ebonized Ash  
A-EB



Teak  
T-NA



Iroko  
I-NA



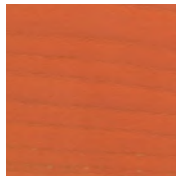
Sage Green Ash  
A-SG



Sun Yellow Ash  
A-SY



Horizon Blue Ash  
A-HB



Mesa Red Ash  
A-MR

# Elegant

Leather

BassamFellows  
Leather



95947 Oxblood



11038 Platinum  
Gray



43024 Camel



43807 British Tan



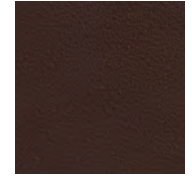
48027 Olive



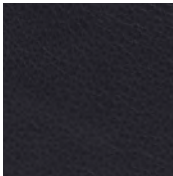
91059 Anthracite



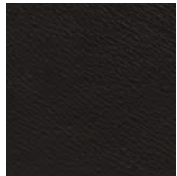
93718 Dark Cognac



93957 Dark Brown



97026 Dark Navy



99001 Black

---

Elegant grain leather is aniline-dyed with a batique-effect that displays the natural character of the original Scandinavian cattle hide.

Additional colors available. Minimum and upcharge may apply.

## Raw Material

Grain leather from  
Scandinavian cattle

## Thickness

1.0 – 1.2mm

## Finish

Pure aniline leather

## Lightfastness

3

## Price Grade

A

# Coach

Leather

BassamFellows  
Leather



00118 Milk



11073 Pale Gray



11049 Medium Gray



13048 Elephant



01061 Gray Beige



13072 Taupe



02119 Camel



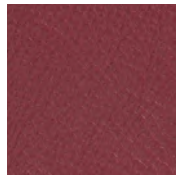
33004 British Tan



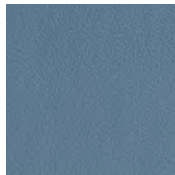
93129 Dark  
Chocolate



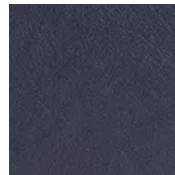
93109 Topaz Brown



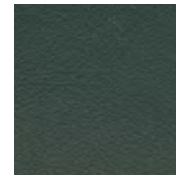
35126 Oxblood



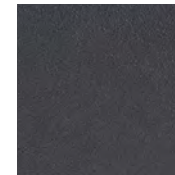
17027 Cadet Blue



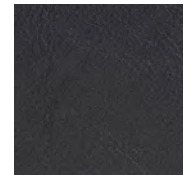
77127 Dark Navy



98015 Dark Green



91102 Anthracite



99999 Black

Coach is a chrome free, soft and pliable semi-aniline leather that offers outstanding comfort combined with excellent durability and is suitable for public environments.

Additional colors available. Minimum and upcharge may apply.

#### Raw Material

Grain leather from Scandinavian cattle

#### Thickness

1.1 - 1.3mm

#### Finish

Semi-Aniline leather

#### Lightfastness

6

#### Price Grade

A

# Comfort

Leather

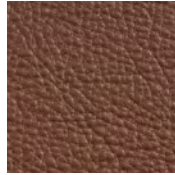
BassamFellows  
Leather



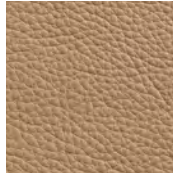
02067 Beige



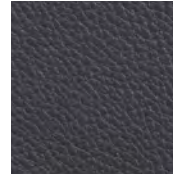
12114 Gray Beige



33286 Chestnut  
Brown



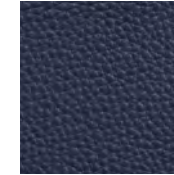
43632 Camel



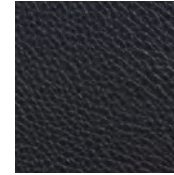
91089 Anthracite



93287 Chocolate



97054 Navy



99991 Black

---

Like the name suggests, Comfort is a soft aniline leather that showcases a varied grain and the distinct features of the natural hide.

Additional colors available. Minimum and upcharge may apply.

## Raw Material

Grain leather from Scandinavian cattle

## Thickness

1.3 - 1.5mm

## Finish

Pure aniline leather

## Lightfastness

3

## Price Grade

B