

Pebble
Pebble Padded Stools

2017

Stools



The BassamFellows Pebble Collection was inspired by a single simple pebble. Architect, Craig Bassam found himself returning again and again to a small, pleasingly shaped pebble he had picked up while walking on the beach on Cape Cod. It had been sitting on his desk for some time and served as a kind of organic stress ball – something tactile and pleasing to turn around in his hand, but also to inspire visually, like a kind of incidental, miniature Henry Moore. The Pebble Padded Stool, which harks back to the object that still sits on Craig Bassam’s desk, went through numerous changes in the upholstery detailing with as few seams as possible.

**CB-274 Pebble
Padded Counter Stool**

W 17 3/4", 45 cm
D 17 7/8", 45.2 cm
H 32 1/4", 82 cm
SH 25 1/8", 64 cm

**CB-275 Pebble
Padded Bar Stool**

W 17 3/4", 45 cm
D 17 7/8", 45.2 cm
H 37 3/4", 95.8 cm
SH 30 1/2", 77.4 cm

Upholstery:
Foam upholstery.
CARB2 plywood inner
shell. Welt detail.

Base:
Tubular steel with smoke
powder coat finish, or satin
nickel, satin brass, bronze,
gunmetal, or custom metal
nanoceramic coated tubular
steel. Counter and bar stools
feature a footrest cap in
brushed stainless steel for
added durability.

Made in Italy

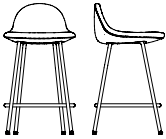
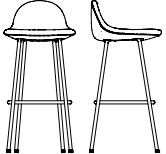


Pebble

Pebble Padded Stools

2017

Stools

Description	W	D	H	Seat H	Arm H	Weight	Pkg Dim	Req. Textile	Req. Leather	Code	Base Price	COM					COL				
												1	2	3	4	5	A	B	C	D	
CB-274 Pebble Padded Counter Stool 	45 cm 17 3/4"	45.2 cm 17 7/8"	82 cm 32 1/4"	64 cm 25 1/8"		10 kg 22 lbs	0.3 cu m 9.4 cu ft			CB-274-MS-NANO						€2,090	€2,170				
CB-275 Pebble Padded Bar Stool 	45 cm 17 3/4"	45.2 cm 17 7/8"	95.8 cm 37 3/4"	77.4 cm 30 1/2"		11 kg 24.2 lbs	0.3 cu m 10.9 cu ft			CB-275-MS-NANO						€2,110	€2,190				

Ordering Instructions

Specify:
 1. Metal Type
 2. Metal Finish
 3. Textile Selection

Example:
CB-274-MS-BZ-99001

MS Steel
BZ Bronze
99001 Elegant, Black

Construction/materials

Upholstery:
 Foam upholstery.
 CARB2 plywood inner shell. Welt detail.

Base:
 Tubular steel with smoke powder coat finish (**SP**), or satin nickel (**SN**), satin brass (**SB**), bronze (**BZ**), gunmetal (**GM**), or custom metal (**CM**) nanoceramic coated tubular steel. Counter and bar stools feature a footrest cap in brushed stainless steel for added durability.

BIFMA

Stability test
 ANSI-BIFMA X5.1-2017/11
Leg strength test–Front application
 ANSI-BIFMA X5.1-2017/17
Leg strength test–Side application
 ANSI-BIFMA X5.1-2017/17
Footrest durability test
 ANSI-BIFMA X5.1-2017/19

Footrest Static Load test - Vertical
 ANSI-BIFMA X5.1-2017/18
Seating durability test–Cyclic
 ANSI-BIFMA X5.1-2017/10
Drop test–Dynamic
 ANSI- BIFMA X5.1-2017/7

Made in Italy

Leather

A
 Coach
 Elegant

B
 Comfort

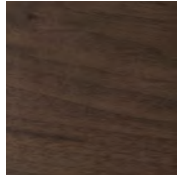
Wood

BassamFellows
Wood

Wood



Walnut
W-NA



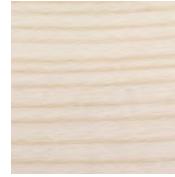
Walnut Black Oil
W-BO



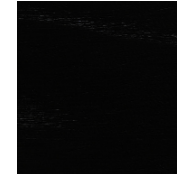
Oak
O-NA



Oak Raw Effect
O-RE



White Ash
A-BL



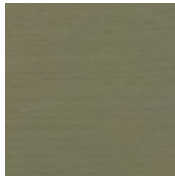
Ebonized Ash
A-EB



Teak
T-NA



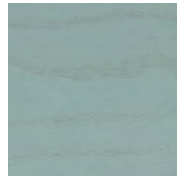
Iroko
I-NA



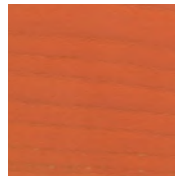
Sage Green Ash
A-SG



Sun Yellow Ash
A-SY



Horizon Blue Ash
A-HB



Mesa Red Ash
A-MR

Metal

BassamFellows
Metal

Metal



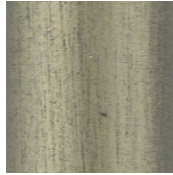
Matte Black
BP



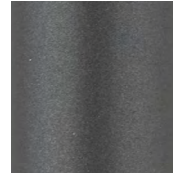
Satin Nickel
SN



Satin Brass
SB



Bronze
BZ



Gunmetal
GM

Nanoceramic coated steel is a more durable and environmentally improved alternative to traditional metal plating where nano particles of metal are mixed with resin and sprayed onto the metal surface versus being placed in a chemical bath.

Additional colors available. Minimum and upcharge may apply.

Matte Black

Powder coated steel

Satin Nickel

Nanoceramic coated steel

Satin Brass

Nanoceramic coated steel

Bronze

Nanoceramic coated steel

Gunmetal

Nanoceramic coated steel

Elegant

BassamFellows
Leather

Leather



95947 Oxblood



11038 Platinum
Gray



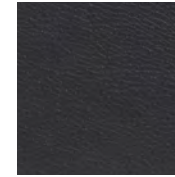
43024 Camel



43807 British Tan



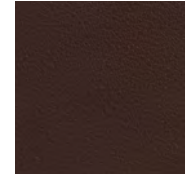
48027 Olive



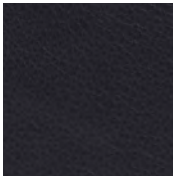
91059 Anthracite



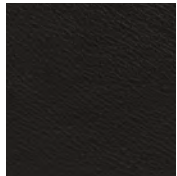
93718 Dark Cognac



93957 Dark Brown



97026 Dark Navy



99001 Black

Elegant grain leather is aniline-dyed with a batique-effect that displays the natural character of the original Scandinavian cattle hide.

Additional colors available. Minimum and upcharge may apply.

Raw Material

Grain leather from
Scandinavian cattle

Thickness

1.0 – 1.2mm

Finish

Pure aniline leather

Lightfastness

3

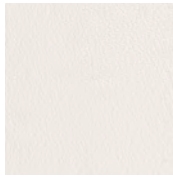
Price Grade

A

Coach

Leather

BassamFellows
Leather



00118 Milk



11073 Pale Gray



11049 Medium Gray



13048 Elephant



01061 Gray Beige



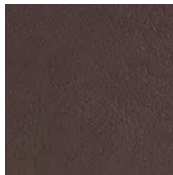
13072 Taupe



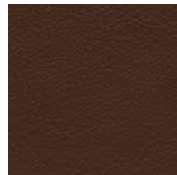
02119 Camel



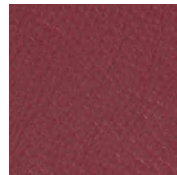
33004 British Tan



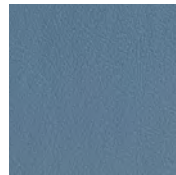
93129 Dark
Chocolate



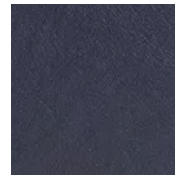
93109 Topaz Brown



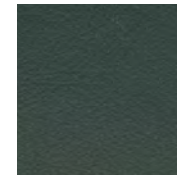
35126 Oxblood



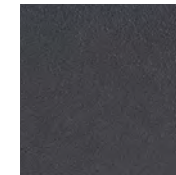
17027 Cadet Blue



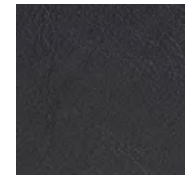
77127 Dark Navy



98015 Dark Green



91102 Anthracite



99999 Black

Coach is a chrome free, soft and pliable semi-aniline leather that offers outstanding comfort combined with excellent durability and is suitable for public environments.

Additional colors available. Minimum and upcharge may apply.

Raw Material

Grain leather from Scandinavian cattle

Thickness

1.1 - 1.3mm

Finish

Semi-Aniline leather

Lightfastness

6

Price Grade

A

Comfort

BassamFellows
Leather

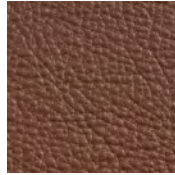
Leather



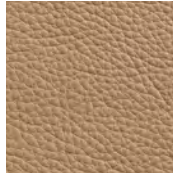
02067 Beige



12114 Gray Beige



33286 Chestnut
Brown



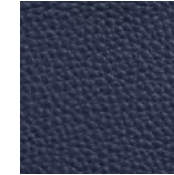
43632 Camel



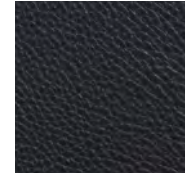
91089 Anthracite



93287 Chocolate



97054 Navy



99991 Black

Like the name suggests, Comfort is a soft aniline leather that showcases a varied grain and the distinct features of the natural hide.

Additional colors available. Minimum and upcharge may apply.

Raw Material

Grain leather from
Scandinavian cattle

Thickness

1.3 - 1.5mm

Finish

Pure aniline leather

Lightfastness

3

Price Grade

B