

## Spoke

### Spoke Occasional Tables

2013

Occasional Tables



The BassamFellows Spoke Table was originally commissioned by a large Australian architecture firm who were looking for the perfect wooden table that would complement other pieces from the BassamFellows collection. Evocative of simple geometric line drawings, the table features a large wooden ring supported by three spokes, which connect seamlessly to the outer edges. The perfect timber circle - the work of the company's master craftsmen - emphasizes the wood's grain, producing a compelling concentric effect best admired through a glass top. The table's elliptical legs achieve a slim, tapered silhouette which balances the top's sense of bold geometry. With no hard edges, the legs can appear wide or thin, depending on the angle in which you consider them. The result is a piece that balances heft and levity, an elegant and versatile table that marries architectural precision with timeless craftsmanship.

#### CB-321 Spoke Side Table

W 19 5/8", 50 cm  
D 19 5/8", 50 cm  
H 17 3/4", 45 cm

#### CB-322 Spoke Coffee Table

W 35 1/2", 90 cm  
D 35 1/2", 90 cm  
H 15 3/4", 40 cm

*Wood:*  
Solid Ash  
Solid Oak  
Solid Walnut

*Finish:*  
Ebonized black lacquer on Ash or bleached, white pigment, matte acrylic on Ash. Raw effect lacquer on Oak. Hand rubbed natural oil on Oak or Walnut, or hand rubbed black oil on Walnut.

Sliced solid wood, custom laminated, bent and carved. Low iron glass inset top.


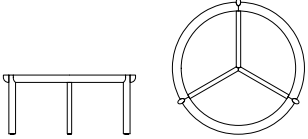
Made in Italy



## Spoke

### Spoke Occasional Tables

2013

Description	W	D	H	Top	Weight	Pkg Dim	Req. Textile	Req. Leather
<b>CB-321 Spoke Side Table</b>	50 cm 19 5/8"	50 cm 19 5/8"	45 cm 17 3/4"		8.5 kg 18.7 lbs	0.2 cu m 5.9 cu ft		
								
<b>CB-322 Spoke Coffee Table</b>	90 cm 35 1/2"	90 cm 35 1/2"	40 cm 15 3/4"		43.1 kg 95 lbs	0.8 cu m 27.8 cu ft		
								

#### Ordering Instructions

##### Specify:

1. Wood Type
2. Finish

##### Example:

**CB-321-W-NA**

**W** Solid Walnut  
**NA** Natural Oil

#### Construction/materials

##### Wood:

Solid Ash (**A**)  
Solid Oak (**O**)  
Solid Walnut (**W**)

##### Finish:

Ebonized black lacquer on Ash (**EB**) or bleached, white pigment, matte acrylic on Ash (**BL**). Raw effect lacquer on Oak (**RE**). Hand rubbed natural oil on Oak or Walnut (**NA**), or hand rubbed black oil on Walnut (**BO**).

Sliced solid wood, custom laminated, bent and carved.  
Low iron glass inset top.

Made in Italy

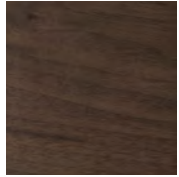
# Wood

BassamFellows  
Wood

Wood



Walnut  
W-NA



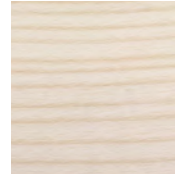
Walnut Black Oil  
W-BO



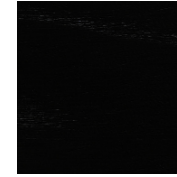
Oak  
O-NA



Oak Raw Effect  
O-RE



White Ash  
A-BL



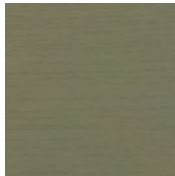
Ebonized Ash  
A-EB



Teak  
T-NA



Iroko  
I-NA



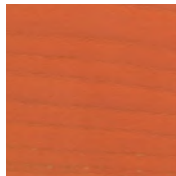
Sage Green Ash  
A-SG



Sun Yellow Ash  
A-SY



Horizon Blue Ash  
A-HB



Mesa Red Ash  
A-MR